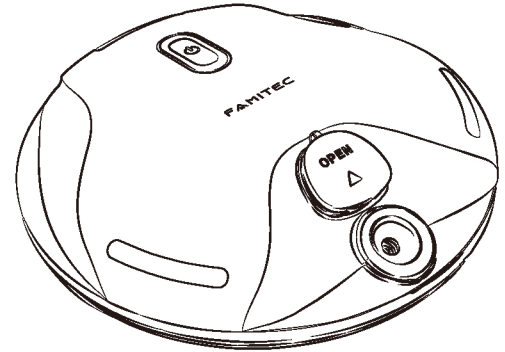


FAMITEC™

Robotic Mobile Atomizer

Model No.:32-101-01



Famitec Ltd.

<https://www.famitec.com>

info@famitec.com



User Manual V1.0

Contents

	Page
Introduction	3
Important and Safety Instructions	3
Product & Parts List	4
Product Description	4
Technical Specification	5
Power Charging	5-6
Operation Instructions	6-8
Warranty Information	9
Disposal	10
Contact	10
介绍	12
重要和安全說明	12
產品和零件清單	13
產品配件說明	13
技術規格	14
充電方法及步驟	14
操作說明	15-17
保修信息	18
拋棄處理	19
聯絡我們	19

拋棄處理



當產品達到其使用壽命時，請妥善處理。

該產品和其他電器含有可回收利用的有價值材料，如果處理不當，電子垃圾可能對我們的環境有害。

在處理電子設備時遵守您的地區或當地政府或管理機構的規章制度。請尋找您附近的授權回收設施。

聯絡我們

如果您對本產品的操作或保修有任何疑問或疑慮，請通過電子郵件 (info@amitec.com) 聯絡我們的客戶服務。

保修信息

Famitec 向本產品的購買者保證，自購買之日起 12 個月內，本產品在正常使用和服務下不會出現材料和工藝缺陷。Famitec 將自行選擇維修或更換新產品或翻新產品。Famitec 保留在根據本有限保修承擔任何義務之前檢查產品的權利，並且運輸產品進行檢查和保修服務的所有費用應由購買者單獨承擔。

為了以最快的速度處理保修服務，購買者應發送電子郵件至 info@famitec.com，並附上產品名稱和型號、購買證明或發票、完整的聯絡資料和有關問題的詳細信息，包括適用時的圖片。

製造商的有限保修僅在符合以下條件時才有效：

1. 該產品直接從 Famitec 或授權經銷商或分銷商處購買。
2. 本保修僅涵蓋購買者。本保修不得轉讓。
3. 產品僅供個人使用。如果產品用於商業或機構，則此保修無效。
4. 本保修不包括因誤用、濫用、疏忽、事故、購買者自行或未經授權的修改或維修而造成的正常磨損或損壞。
5. 購買者必須出示可接受的產品購買證明或發票。

Introduction

Famitec Bloom Robotic Mobile Atomizer can smartly move around and automatically rotate when encountering obstacles. The device create mist from distilled water, and use the diffusible and non-toxic liquid for humidification/aroma diffusion/Sanitation.

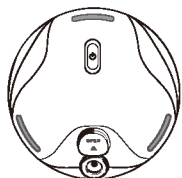
Before the first time to use the device, please read the user manual completely and keep it for future reference.

Important and Safety Instructions

- The device is not a toy, and it cannot be operated by children age under 12.
- Close supervision is necessary when the device is used or near by children.
- The device is intended for household use only.
- Do not place the device on or near hot or fire source.
- Do not immerse the device in water and liquid.
- Use the bundled plastic bottle (~50ml) to refill the liquid.
- Keep away from the atomizer for at least 3 feet to avoid inhalation.
- Do not use alcohol & bleach liquid for diffusion.
- Do not use corrosive detergents to avoid product damage.
- Use suitable sprays and non-toxic liquid.
- Not recommend to use the liquid, except distilled water, more than 50ml per day to avoid inhalation of excessive mist.
- Read the User Manual and ingredients of the liquid before use.
- Make sure the tank is filled with liquid before use.
- Must remove the liquid in the tank after each use.
- Do not touch the atomizer's nozzle when the power is on.

- Don't scratch the nozzle by hard objects, suggest to clean the nozzle periodically.
- Use the distilled water for humidification to avoid the nozzle is clogged.

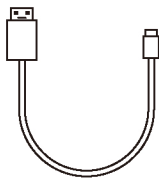
Product & Parts List



Robotic mobile
Atomizer



Plastic bottle

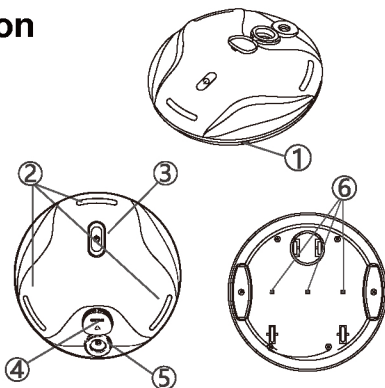


USB Type C cable

- The USB cable is used for charging only, the battery charger is not included in this package.

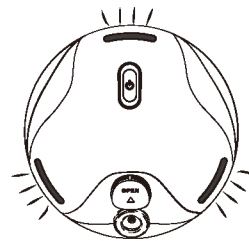
Product Description

1. USB Type C port
2. Blue LED Indication lights
3. Power button
4. Water Tank with cover
5. Atomizer Nozzle
6. UVC LED lights



操作說明

8. 當低電量時，產品會停止運行，LED燈會連續閃動，如在5分鐘內沒有收到任何其他指令，產品會自動關機。低電量狀態下，請及時充電。



9. 如需重新啟動產品運行，可重複步驟一。

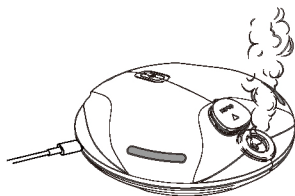
操作說明

5. 產品充滿電後，不同單一模式的連續操作時間。

- a. 移動噴霧模式 – 不少於 3 小時
- b. 靜止噴霧模式 – 不少於 5 小時

每次使用前將液體注入水箱中，或在不同模式下連續操作設備前將液體注入水箱中。

6. 在靜止噴霧模式下，可以同時進行USB充電。請參考說明書中的充電說明。



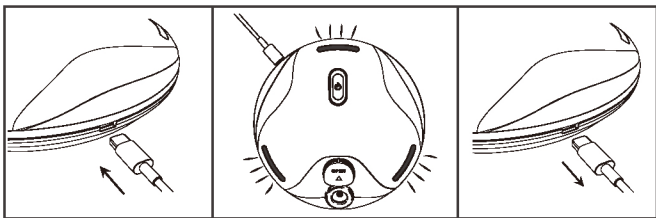
7. 在開動期間亦可隨時長按開關按鈕1秒把產品關機。

Technical Specification

Charging voltage	DC 5V,2A
Battery capacity	2000 mAh
Water tank capacity	60ml
Product size	180mm×180mm×54mm
Item weight	290 ±5g
Accessories	Plastic bottle (50ml) USB Type C cable
Packaging size	213mm(W)*213mm(L)*80mm(H)
Operating temperature	Charge 0~45 °C (32~113 °F) Discharge -10~35 °C (14~95 °F)
Storage temperature	-2~40 °C (28.4~104 °F)

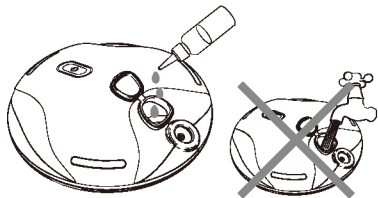
Power Charging

1. This device contains a rechargeable battery and fully charge the battery before first use.
2. Use the bundled USB cable for power charging. Plug in the USB cable to the USB port on the device.
3. The three LED lights on the top of the device will flash in a cycle until all of them are lighted up at the same time, which means that the device has been fully charged.
4. Turn off the power supply and disconnect the USB cable from the device after the device is fully charged.



Operation Instructions

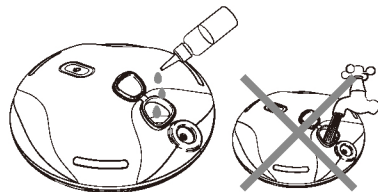
1. Open the tank cover, use the plastic bottle to fill liquid to the tank (around 50ml), then close the cover.



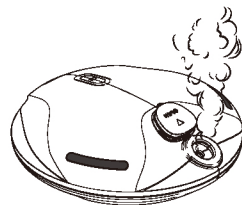
2. Press the Power button around 1 seconds to power on the device. Three blue LED lights will light up in a cycle twice, indicating that device is ready.
3. After the blue LED lights are all on, the device will be in Stand Mode and run the atomization spray program.

操作說明

1. 打開水箱蓋，用附上的膠瓶將液體注入水箱內（裝入50ml），並關上水箱蓋。



2. 長按開關按鈕1秒，3個藍色LED燈會循環亮兩次，表示產品已準備開動。
3. 藍色LED燈全亮後，開始霧化噴霧程序和進入靜止噴霧模式。



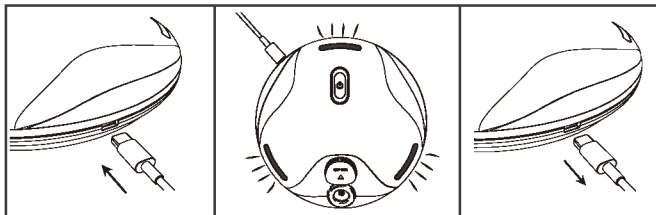
4. 再次按開關按鈕，產品進入始移動噴霧模式，在開動期間可隨時反覆按開關按鈕把產品轉換不同工作模式。

技術規格

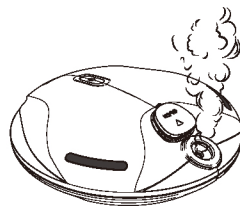
充電電壓	DC 5V,2A
電池容量	2000 mAh
內部水箱容量	60毫升
主機尺寸	180毫米×180毫米×54毫米
產品重量	290±5g
配件	50毫升塑料小樽 USB Type C 綫
包裝盒尺寸	213毫米(W)*213毫米(L)*80毫米(H)
使用溫度	充電 0~45 攝氏 (華氏32~113) 放電 -10~35 攝氏 (華氏14~95)
存放溫度	-2~40 攝氏 (華氏28.4~104)

充電方法及步驟

1. 本產品含有可充電的電池在內，第一次使用時，將電池充滿。
2. 先將隨附的USB充電線插入主機USB充電端口，再接通電源。
3. 產品頂部的3個LED燈會循環閃亮，直至3個LED燈同時亮起時，本產品已完成充電。
4. 先關閉電源，再把USB充電線移除主機。



Operation Instructions



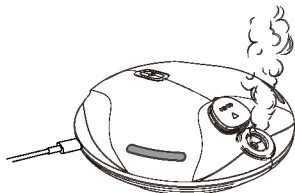
4. Turn to Mobile Mode and start to move around if press the Power button again. Turn again to Stand Mode by press Power button one more time. The device can be changed to different mode by press Power button repeatedly.

5. After the device is fully charged, the operation time of different single mode.
 - a. Mobile Mode – not less than 3 hours
 - b. Stand Mode – not less than 5 hours

Fill the liquid to tank every time before use, or continuous to operate the device in different mode.

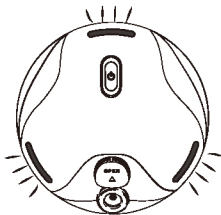
Operation Instructions

6. The device can be charging by USB Power supply when it is operated in Stand Mode. Please refer to the instruction of Power Charging in this manual.



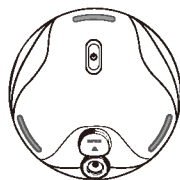
7. The device will shut down if press Power button around 1 seconds although it is operation.

8. The device will stop running when low battery and the blue LED lights are flashing for 5 minutes. The device will automatically shut down without any further commands in 5 minutes. The LED lights will flash at low battery status, please charge in time.



9. Restart the operation of device, can repeat the step 1 again.

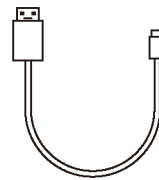
產品和零件清單



智慧移動噴霧器



塑料小樽
50 ml

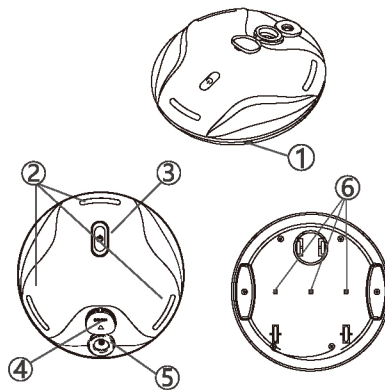


USB Type C 充電線

- 需使用本產品所提供之USB充電線充電, 電池充電電源不包含在此包裝內。

產品配件說明

1. USB C 型端口
2. 藍色LED指示燈
3. 開關按鈕
4. 帶蓋水箱
5. 霧化噴嘴
6. UVC LED燈



介绍

Famitec此款霧化噴霧器可自動行走和遇到障礙物自動回轉，進行霧化加濕/薰香/消毒（需配適當的霧化無毒害之薰香/消毒液體）的同時以UVC LED燈作地面消毒。外形美觀小巧，造型線條流暢，時尚簡潔，是家居好幫手。

首次使用設備前，請完整閱讀用戶手冊並妥善保存以備日後參考。

重要和安全說明

- 產品不是玩具，12歲以下兒童不能操作。
- 當產品使用或靠近兒童時，需要密切監督。
- 產品僅供家庭使用。
- 請勿將產品靠近熱源或火源。
- 請勿將產品浸入水中或液體中。
- 請使用提供的膠樽注入適量（~50ml）的液體。
- 使用時，請距離噴霧最少3尺，以免吸入噴霧。
- 不可使用酒精，漂白水等作為液體進行擴散。
- 不應使用有腐蝕性之液體以免導致損壞。
- 選用適合噴霧及無毒害之液體。
- 除蒸餾水外，使用的液體，不建議每天超過 50 毫升，以免吸入過多的霧氣。
- 使用的液體前，閱讀液體用戶手冊和液體成分。
- 確保每次使用前，水箱必須注入液體。
- 每次使用後請清除水箱內之液體。
- 每當電源接通後，切勿接觸霧化噴嘴。
- 不能用硬物刮擦噴嘴，建議定期清洗保養。
- 如用水作霧化，請用蒸餾水，以免自來水的水垢堵塞噴嘴。

Warranty Information

Famitec provide the product warranty services to the original purchaser of this product that this product will be free from defects in material and workmanship under normal use and service for 12 months from date of purchase. We will, at its option, repair or replace with a new or refurbished product. We reserve the right, before having any obligation under this limited warranty, to inspect the product, and all costs of shipping the product for inspection and warranty service shall be borne solely by the purchaser.

For the fastest processing of a warranty claim, the purchaser should e-mail info@famitec.com and include the product name and model #, proof of original purchase, complete contact information, and detailed information about the issue, including pictures when applicable.

The limited warranty is valid only in accordance with the following conditions:

1. The product is purchased directly from Famitec, or an authorized reseller, or distributor.
2. Only the original purchaser is covered by this warranty. This warranty is not transferable.
3. Product is for personal use only. This warranty is void if the product is used in a commercial or institutional establishment.
4. This warranty does not cover normal wear and tear or damage caused by misuse, abuse, negligence, accident, acts of nature, or unauthorized modification or repair.
5. Purchaser must present acceptable proof of purchase for the product.

Disposal



When this device has reached the end of its life, please dispose of the device properly.

This and other electrical appliance contain valuable materials that can be used recycled. Electronic waste may be harmful to our environment if not disposed of properly.

We ask that you follow your governing agency's rules and regulations when disposing of electronic appliances. Please find an authorized recycling facility near you.

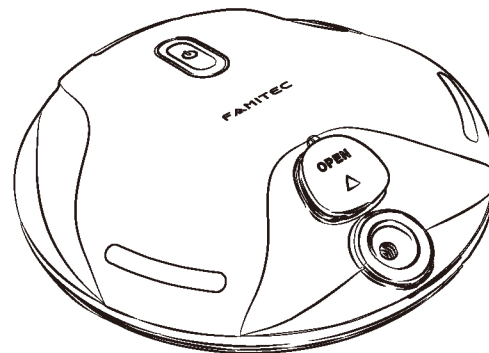
Contact

If you have any questions or concerns about operation or warranty of this product, please contact our customer service by email info@famitec.com

FAMITEC™

智慧移動噴霧器

型號:32-101-01



使用說明書 V1.0